

## Geotechnical investigations required adjacent to Bicentennial Bikeway

**Early works to investigate ground conditions are in sections adjacent to the Bicentennial Bikeway, which may require some temporary reductions in width, however bikeway access will be maintained at all times.**

### When:

**From Monday 29 June to Monday 10 August 2020, between 9.00am and 4.00pm from Monday to Friday** (outside peak commute times), geotechnical works for bore hole drilling and test pit works will be undertaken. All works are subject to change, and if circumstances require, they will be rescheduled.

### Where:

Exclusion areas for bore hole drilling and test pits will be set up adjacent to the Bicentennial bikeway in various locations. At times, sections of the bikeway may be reduced in width to allow for these exclusion areas (see map over page).

### What to expect:

### Queen's Wharf Brisbane

Queen's Wharf Brisbane will be a transformational city changing project for Brisbane that will see an underutilised area of the CBD brought back to life with new purpose and exciting energy.

When complete there will be 50 restaurants, cafes and bars; a signature sky deck approximately 100 metres above William St and open to the public, five and six-star luxury hotels, the equivalent of 12 football fields of public space, world-class gaming, a new pedestrian bridge, four key retail zones and 2,000 residential apartments.

The core of the development is expected to open in 2022 with the transformation of Treasury Hotel and Casino into a high end retail centre and The Ritz-Carlton Brisbane to be complete in 2024.

For more information visit  
[www.queenswharfbrisbane.com.au](http://www.queenswharfbrisbane.com.au)

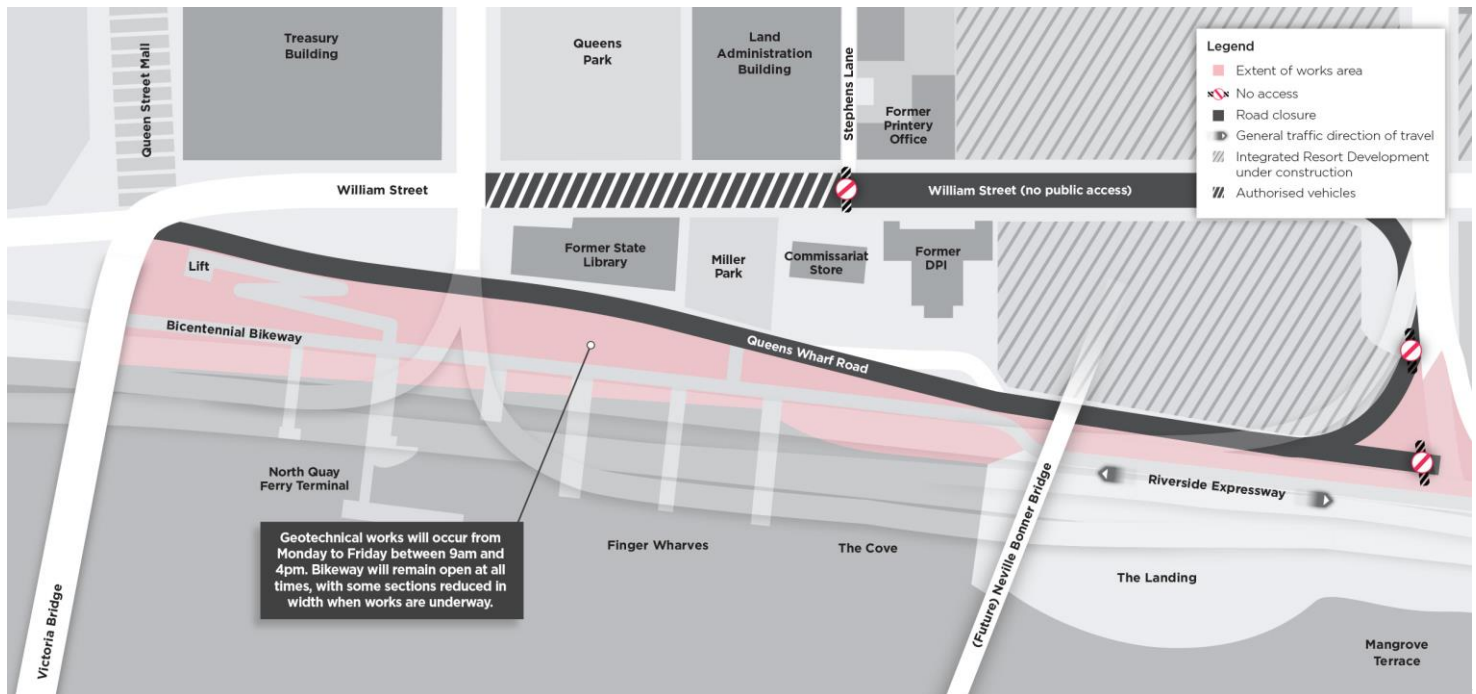
**Destination Brisbane Consortium**  
PO Box 13226 George street  
Brisbane Q 4003  
P: 1800 104 535  
E: [QWBenquiries@destinationbrisbane.com.au](mailto:QWBenquiries@destinationbrisbane.com.au)  
[facebook.com/queenswharfbrisbane](https://facebook.com/queenswharfbrisbane)

**For construction enquiries contact:**  
P: 1800 931 760 (toll free)  
E: [queenswharfbrisbane@multiplex.global](mailto:queenswharfbrisbane@multiplex.global)

The bikeway will remain open, with the width reduced in some areas while works are underway. Works will include:

- A drill rig and support vehicles
- Temporary fencing around the exclusion area
- Workers in the exclusion area undertaking drilling and test pit works
- Intermittent noise while drilling occurs.

## Site Map



For more information visit  
[www.queenswharfbrisbane.com.au](http://www.queenswharfbrisbane.com.au)

Destination Brisbane Consortium  
PO Box 13226 George street  
Brisbane Q 4003  
P: 1800 104 535  
E: [QWBenquiries@destinationbrisbane.com.au](mailto:QWBenquiries@destinationbrisbane.com.au)  
[facebook.com/queenswharfbrisbane](https://www.facebook.com/queenswharfbrisbane)

For construction enquiries contact:  
P: 1800 931 760 (toll free)  
E: [queenswharfbrisbane@multiplex.global](mailto:queenswharfbrisbane@multiplex.global)